



WILL'S WELLS

www.wills-wells.com

ZIMBABWE ADVENTURE



Hwange National Park

Hwange, one of the world's last great Elephant sanctuaries, is the largest national park in Zimbabwe. Covering more than 14,600 square kilometers(5,863 square miles) or 1,460,000 hectares it has more animals and a greater variety of species -107- than any other park in the country, and more than 400 species of birds. It is situated in the south west of Zimbabwe between Bulawayo and Victoria Falls.

There are two distinct geographic zones, neither are able to support viable agriculture. The flora of the well drained northern area, part of the Zambezi watershed, is dominated by mopane and mixed terminalia, which is distinctly different from the rest.

Elsewhere the Kalahari scrub-lands, covered with stunted, scattered woodlands of teak and umtshibi trees, drain into Botswana's Makgadikgadi Depression. This habitat is characterized by marshy depressions and fragile open grasslands on shallow soils.



Hwange in the Green Season.

The welcome rain breathes life back into the dry and dusty bush and brings a flurry of excitement with new animals, birds and bugs as the rains signify the start of the birthing season. You can look forward to seeing lots of fawns, foals and calves from an array of animals such as antelope, impala, kudu, waterbuck and zebra.

The Green Season is the best season for birding with migrant birds returning to Hwange National Park to build their nests and raise their nestling's so we highly recommend signing up for a birding safari with one of our professional and knowledgeable guides.

Stunning Landscapes

The warm summer rains completely transform the landscape from dusty and hazy to fresh, lush and green. Some argue that this is the time that Africa's stunning landscape is at its finest. Our favorite time of day is during the late afternoon when you can sit back and watch the dramatic skies fill up with rain clouds which is followed by a striking sunset, allowing you to capture an array of amazing colors!

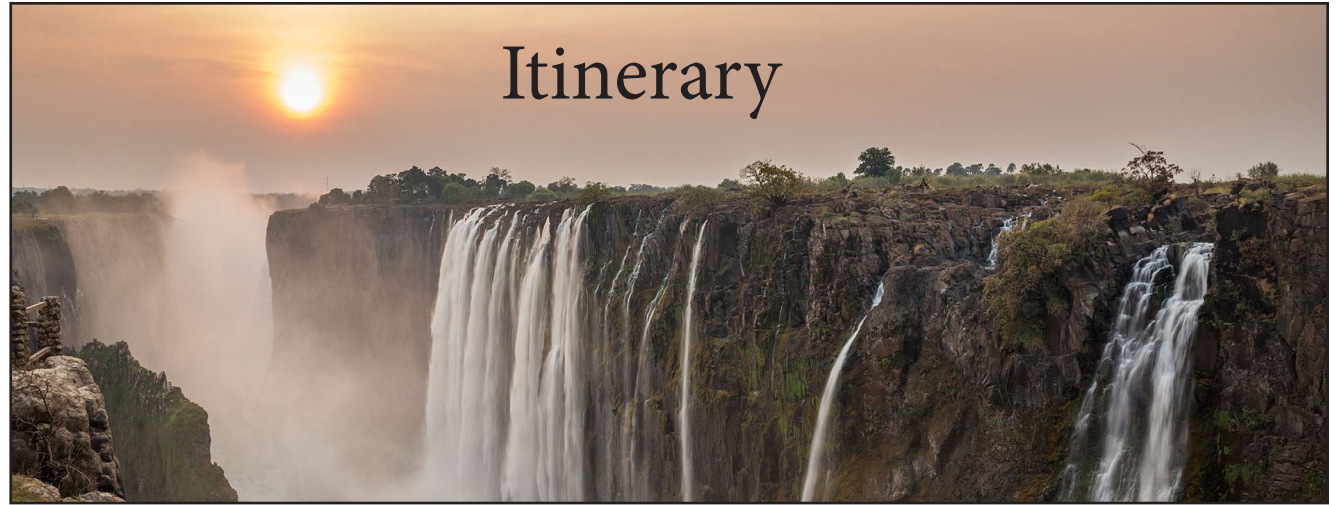
Incredible Photographic Opportunities

As all good photographers know, light is one of the most important elements to that perfect shot. The Green Season provides the best light of the entire year, with crisp and clear air, golden glowing rays and moody grays when the clouds set in for their brief afternoon appearance, ensuring there is art in every frame. In addition, there are endless birds to photograph, flora and fauna and wildlife action, from the new-born animals taking their first steps to dramatic predator scenes.



Fly to Victoria Falls Zimbabwe.

Night 1- arrive in Victoria Falls airport, 30 minute transfer to the town of Victoria Falls. Check into your room and relax. Evening sundowners on the Victoria Falls Hotel veranda followed by dinner in the Iconic Livingston dining room. Re-pack and organize for a 9 night adventure to Hwange. Any baggage you will want to leave for storage will be collected in the morning. After breakfast you will begin a 2 hour road transfer to the town of Dete & begin your journey on the Elephant Express safari rail car to the pickup point for Bomani Lodge.



Bomani Tented Lodge 4 nights

Nights 2,3,4,5- 4 night safari & introduction to conservation in PAC zones where Imvelo shares their vision/goals for the area and wildlife. Explaining how tourism in the communal lands play an important part in conservations. These concessions areas are the unprotected areas that are reliant on entrepreneurs to support the needs of the wildlife and communities to keep this area available for wildlife and actions that are taken to create a symbiotic relationship between the wildlife and the communities.



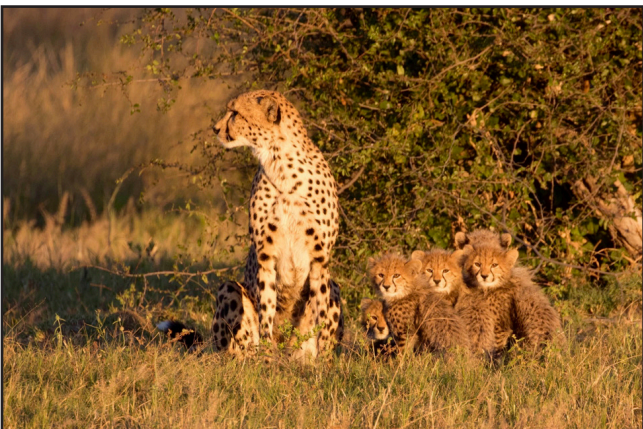


After 4 nights in Bomani you drive for about 5 hours through the park to reach the remote Jozibanini Camp

Nights 6,7,8- Jozi Camp- Focus on community projects and needs. You will visit the communities, see projects in progress & learn about those that need sponsoring. Sharing of successes and also obstacles encountered. Share the vision.

3 nights at Jozibanini. Truly wild! Private! – Jozibanini Camp takes these overworked words to a whole new level. ‘Luxury?’ No; but certainly ‘the luxury of exclusivity.’ Guests of Jozi have hundreds of square kilometers to themselves. Accommodation is in 5 large simple airy dome tents on raised platforms – there is no main lodge; dining is around the campfire. The tents are en-suite, but in another touch from pioneer times, water is heated over a fire and the bucket showers filled by hand. There is not a lot of wildlife at Jozi in the green season but the focus of this stay is the community & the schools.

You will also visit some of our Will’s Wells water well locations to give you an idea of the water struggle and learn more about what Will’s Wells is doing.



After Jozi you head to **Camelthorn Lodge for 2 nights.**

Nights 9,10- Camelthorn – last 2 nights in the bush before heading back to Victoria Falls plus there is a Sunday Service in the village. Camelthorn is where you stay in luxury forest villas and do game drives into Hwange National Park ending up at the unique underground blind at Stof-fie’s Pan for sundowners and canapés and rare moments with nature.

Night drives back to the lodge and then a delectable 3 course dinner out under the stars. Night drives back to the lodge and then a delectable 3 course dinners out under the stars.

Following the 2 nights at Camelthorn you depart and head to Victoria Falls via the Elephant Express.

2 nights Victoria Falls. Vic Falls has tons of shopping, restaurants & activities ranging from bungee jumping to helicopter or ultralight rides over one of the largest and most beautiful waterfalls on the planet.

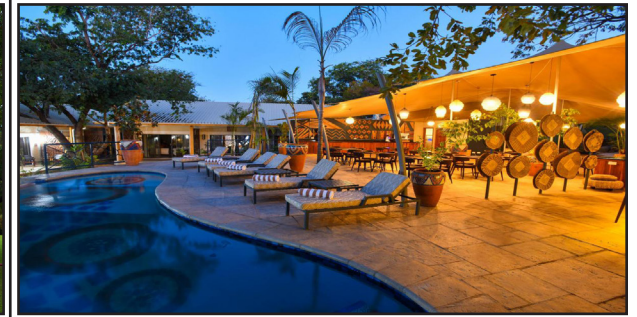
There are lots of options for lodging, we recommend the Shongwe Lookout Lodge

Shongwe

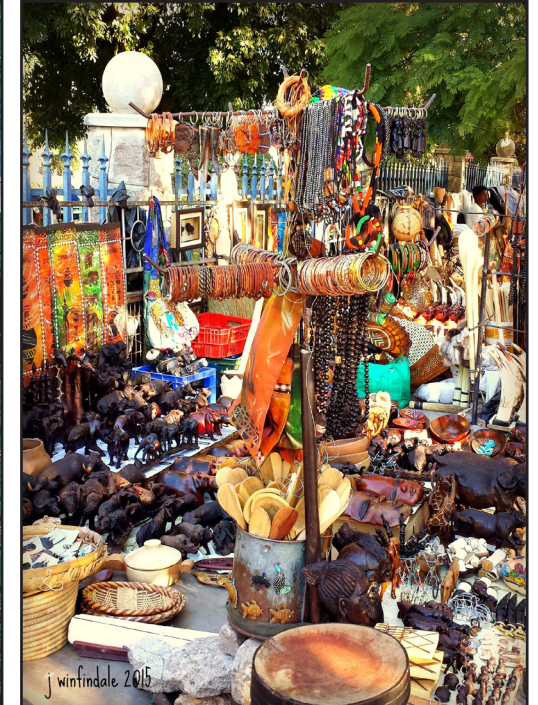
The lodge offers 23 beautifully furnished rooms set in the suburbs of Victoria Falls. The rooms surround our unique Lookout Tower, which offers stunning views of the Zambezi River, and the mist rising above the world famous Victoria Falls.



Victoria Falls Hotel Veranda & Dining Room



Shongwe Lookout Lodge



School Meal Sponsorship

Ngamo Primary School: 323 students
\$10,336 cost of Meals for 8 months
51,680 meals

Ziga Primary School: 143 students
\$4,576 cost of Meals for 8 months
22,880 meals

Mlevu Primary school: 384 students
\$12,288 cost of Meals for 8 months
61,440 meals

Kapane primary School: 330 students
\$10,560 cost of Meals for 8 months
52,800 meals

Ngamo Secondary: 140 students
\$4,480 cost of Meals for 8 months
22,400 meals

Mpindo: 207 students
\$6,624 cost of Meals for 8 months
33,120 meals

Sidinda: 300 students
\$9,600 cost of Meals for 8 months
48,000 meals

Mtshayeli: 466 students
\$14,912 cost of Meals for 8 months
74,560 meals

Sihazela: 120 students
\$3,840 cost of Meals for 8 months
19,200 meals

St Mary's: 95 students
\$3,040 cost of Meals for 8 months
15,200 meals

St Joseph's: 120 students
\$3,840 cost of Meals for 8 months
19,200 meals

